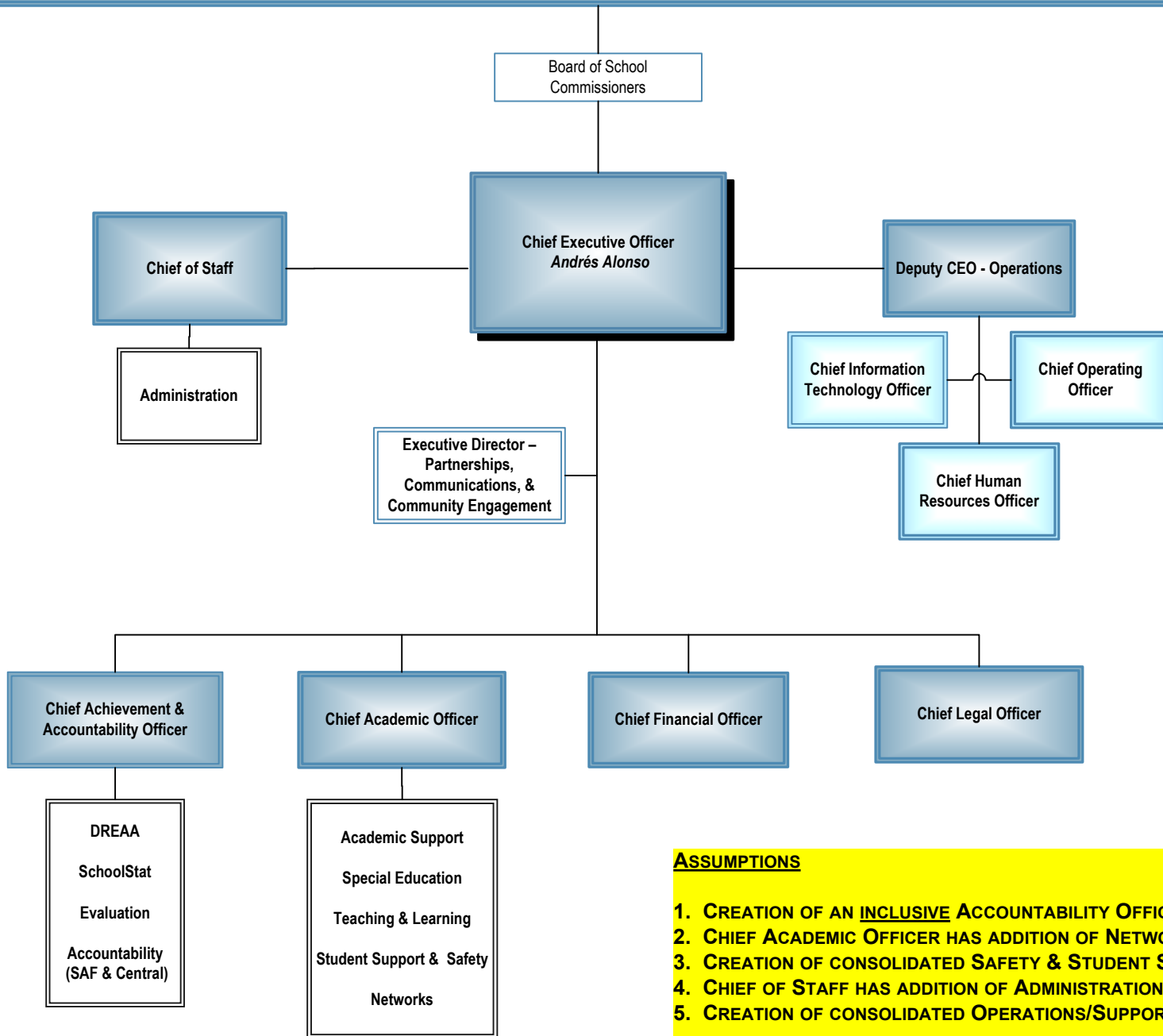


SY 2009 - 2010
BALTIMORE CITY PUBLIC SCHOOLS

PARENTS, STUDENTS, & COMMUNITY



- ASSUMPTIONS**
1. CREATION OF AN **INCLUSIVE ACCOUNTABILITY OFFICE**
 2. **CHIEF ACADEMIC OFFICER HAS ADDITION OF NETWORKS**
 3. CREATION OF **CONSOLIDATED SAFETY & STUDENT SUPPORT OFFICE**
 4. **CHIEF OF STAFF HAS ADDITION OF ADMINISTRATION**
 5. CREATION OF **CONSOLIDATED OPERATIONS/SUPPORT UNIT**